





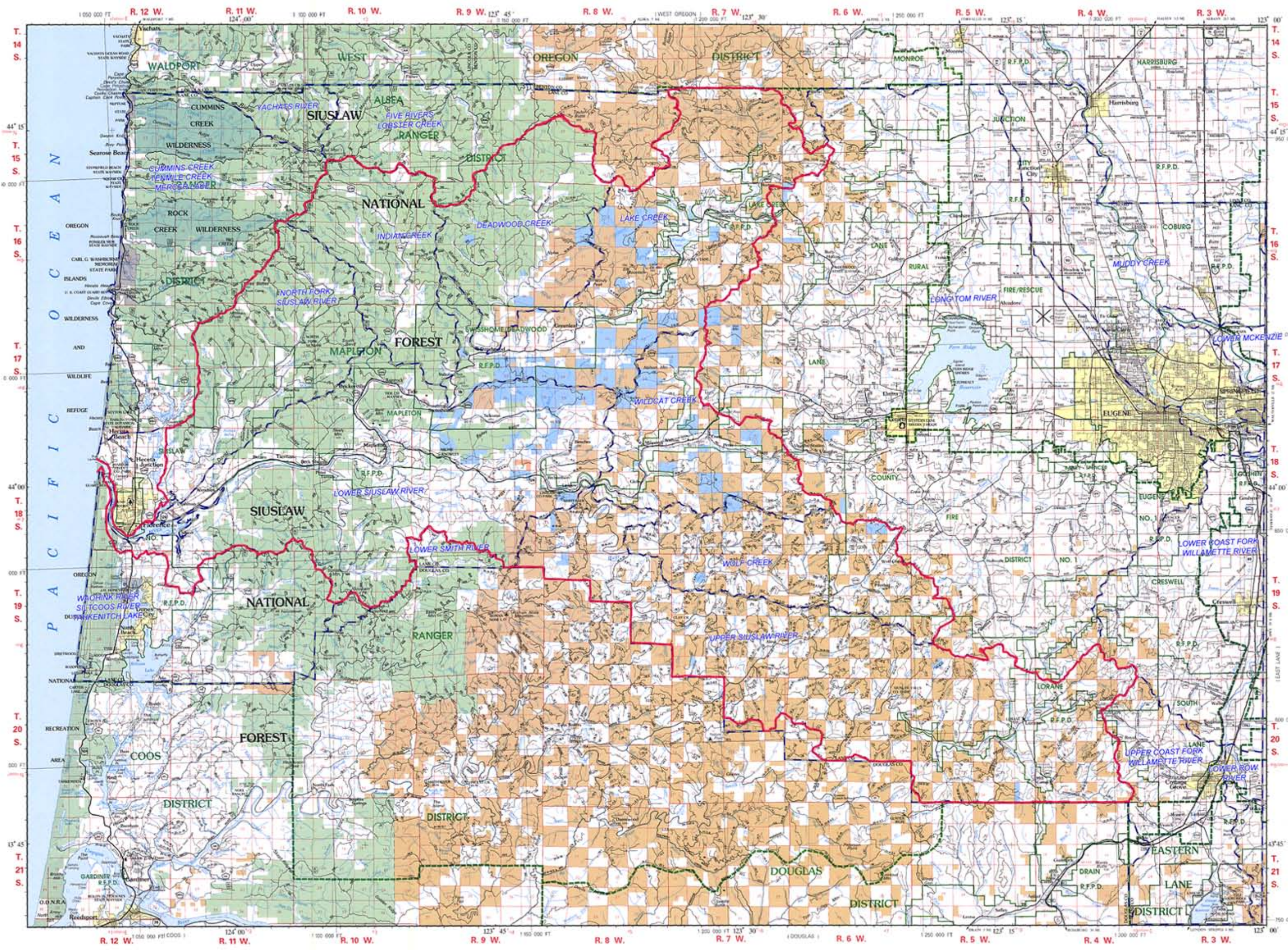
***Siuslaw Watershed Forestry Spray
Mapping Project 1990 – 2006***

Siuslaw Watershed

Presentation ~ Mapleton, Oregon

Presented by
Jan Wroncy and Gary Hale

*Mapped using data from Oregon Department of Forestry
Forest Activity Computerized Tracking System (FACTS)*

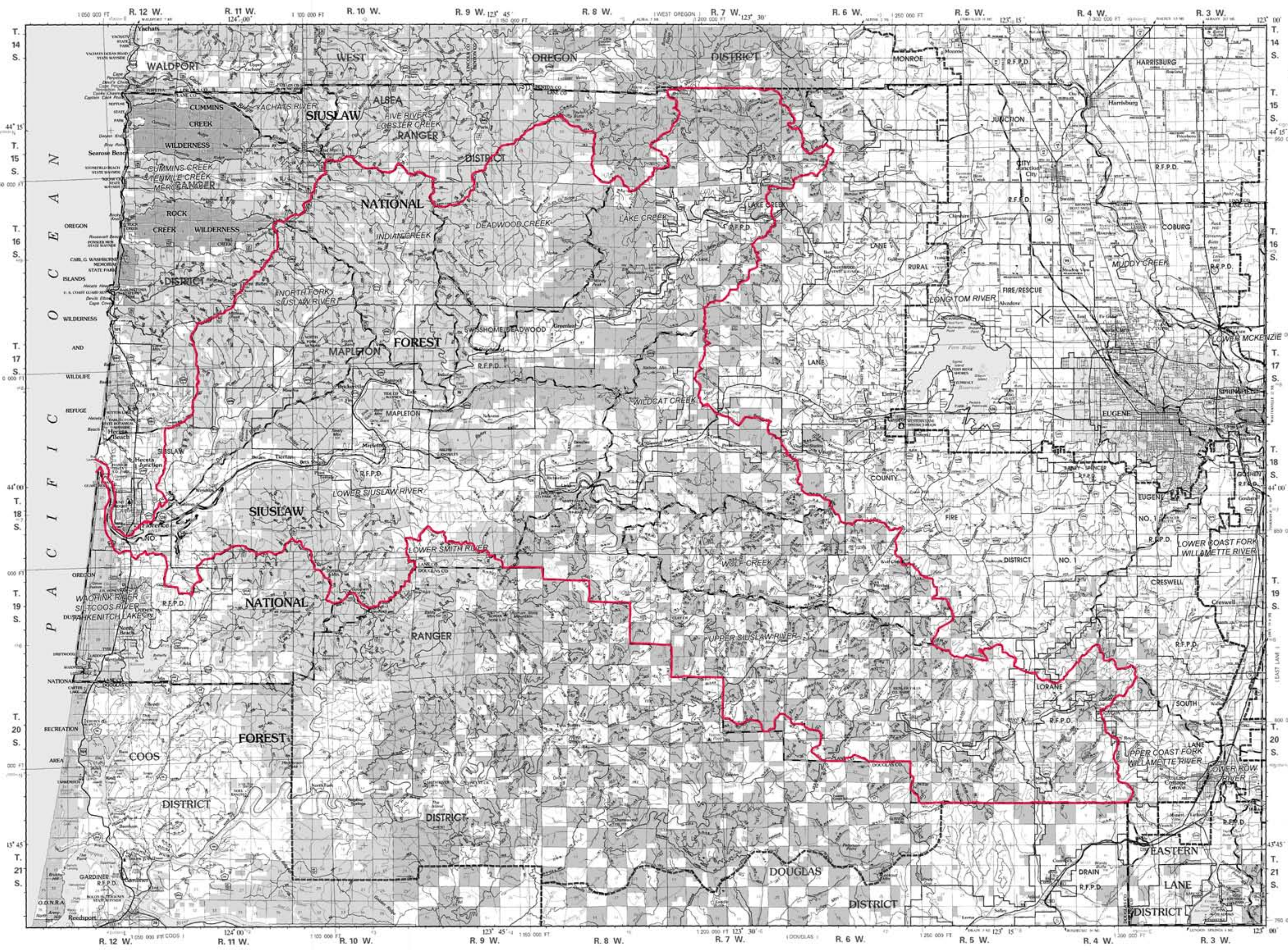


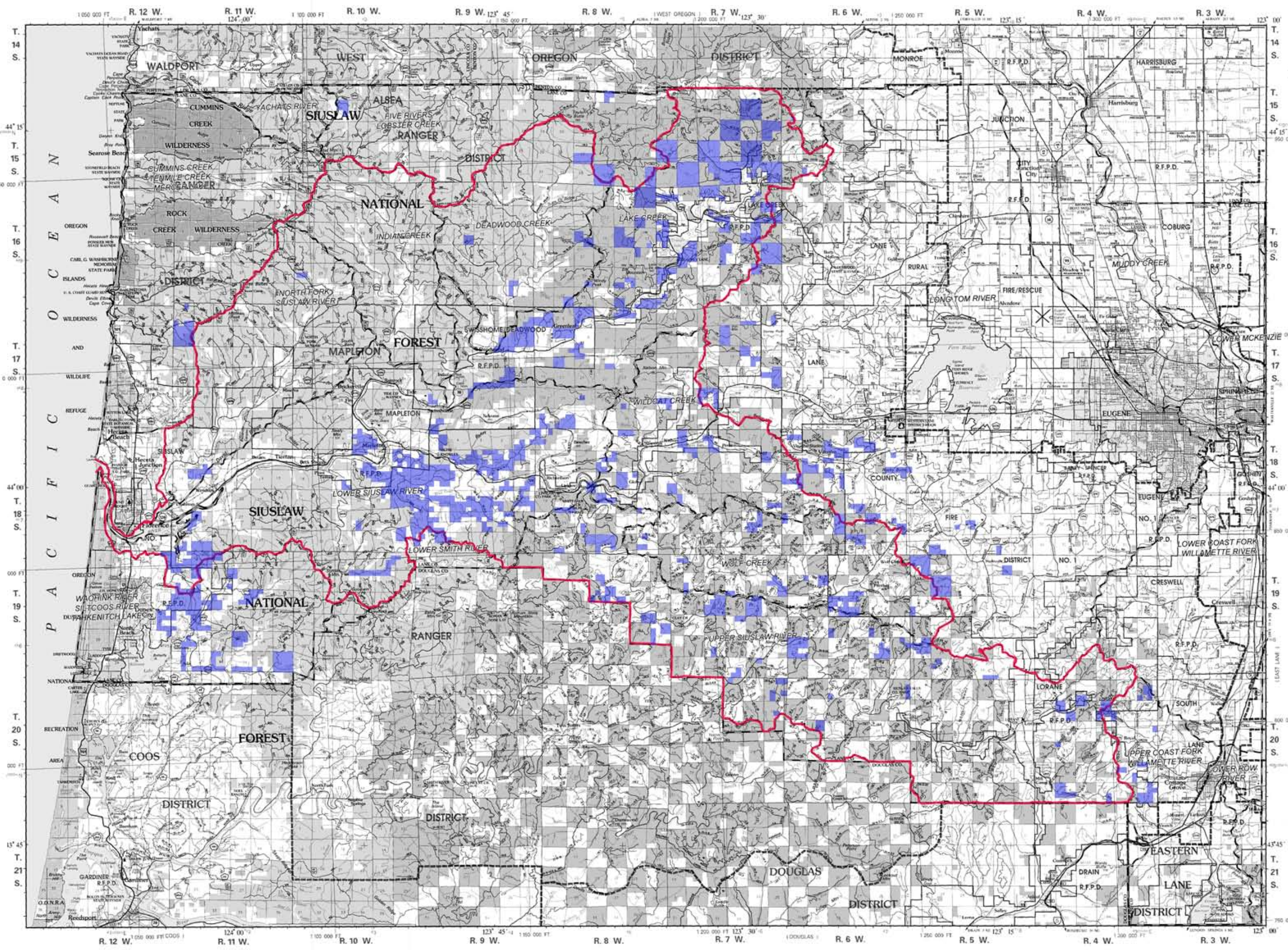
T. 14 S.
T. 15 S.
T. 16 S.
T. 17 S.
T. 18 S.
T. 19 S.
T. 20 S.
T. 21 S.

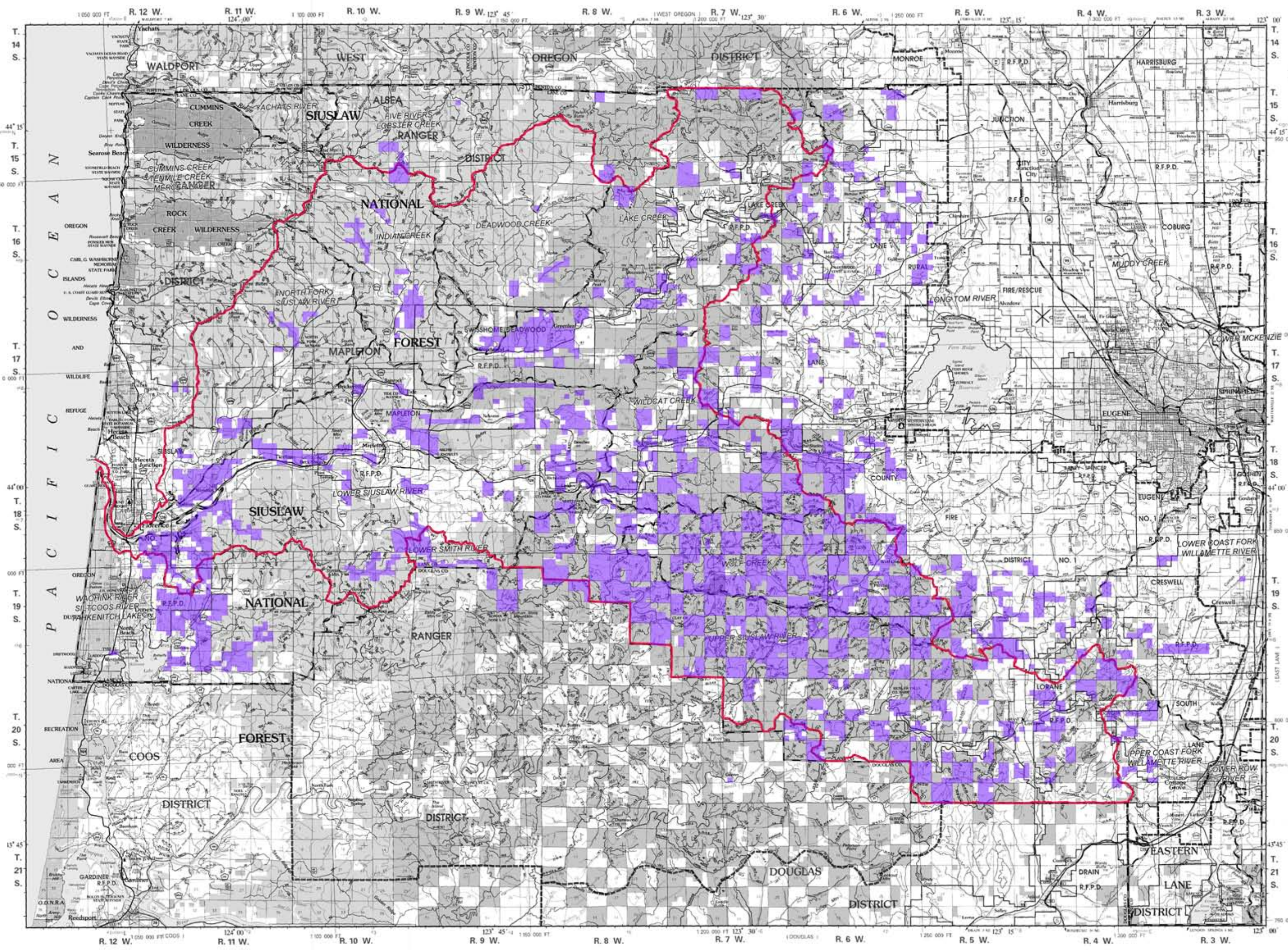
R. 12 W. R. 11 W. R. 10 W. R. 9 W. R. 8 W. R. 7 W. R. 6 W. R. 5 W. R. 4 W. R. 3 W.

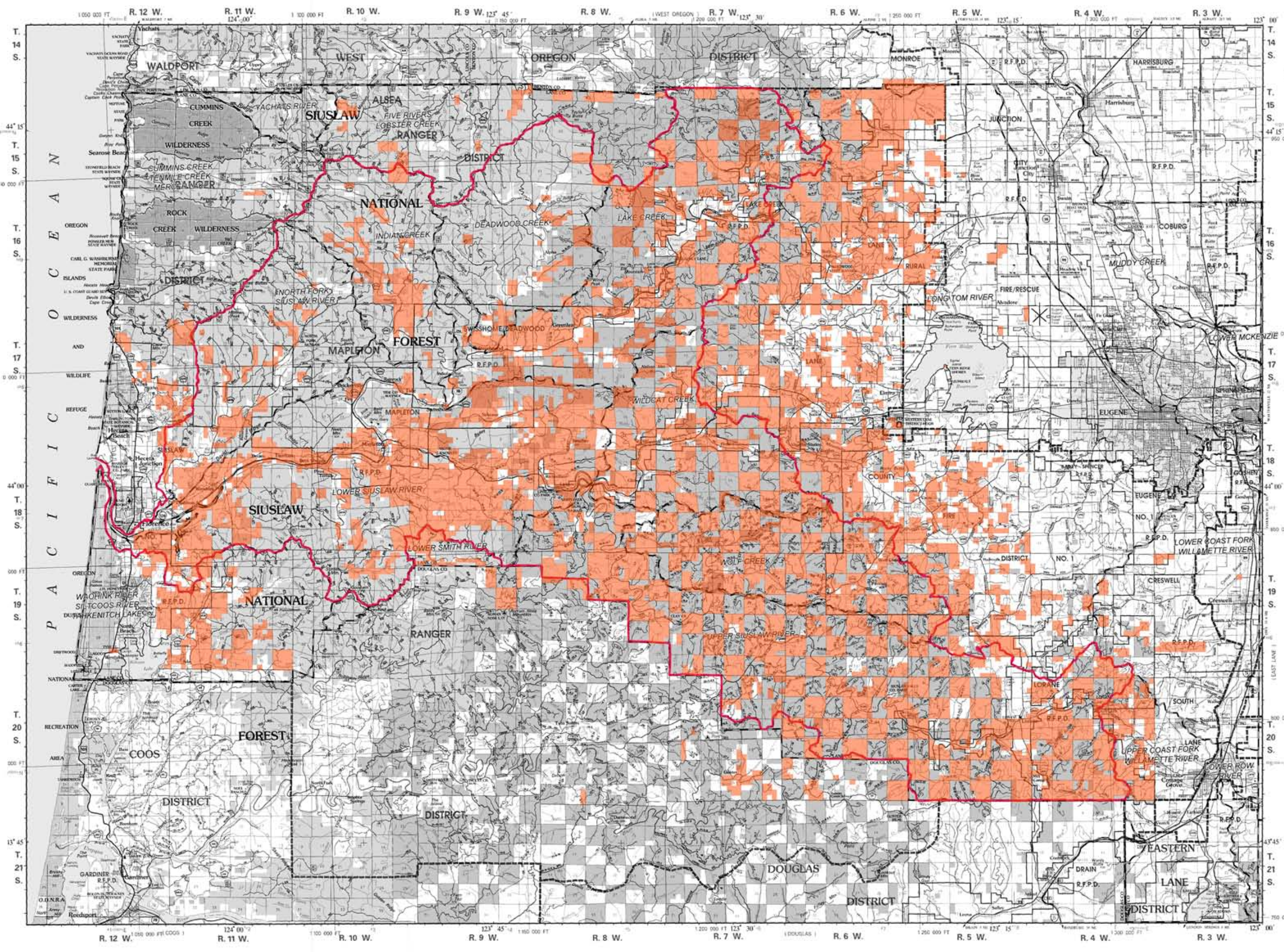
WALDPART
CUMMINS
WILDERNESS
ROCK CREEK
WILDERNESS
SUISLAW
NATIONAL FOREST
SUISLAW
NATIONAL FOREST
COOS DISTRICT
FOREST
ALSEA
FIVE RIVERS
LOBSTER CREEK
RANGER
INDIAN CREEK
DEADWOOD CREEK
LAKE CREEK
WILDCAT CREEK
WOLF CREEK
UPPER SUISLAW RIVER
DOUGLAS DISTRICT
MONROE
JUNCTION
HARRISBURG
COBURG
MUDDY CREEK
LONGTOM RIVER
EUGENE
LOWER COAST FORK WILLAMETTE RIVER
LOWER SUISLAW RIVER
LOWER SMITH RIVER
CRESWELL
LORANE
SOUTH
UPPER COAST FORK WILLAMETTE RIVER
LOWER ROY RIVER
EASTERN DISTRICT
LANE

R. 12 W. R. 11 W. R. 10 W. R. 9 W. R. 8 W. R. 7 W. R. 6 W. R. 5 W. R. 4 W. R. 3 W.











A photograph of a riverbank with a gravelly shore, a pile of large grey rocks, and a red floating barrier in the water. A red sign is attached to a tree on the left. The background is filled with lush green trees and vegetation.

SALMON
SPAWNING
SURVEY



















